

Präkambrische und Paläozoische Riffe

Abbildungen zu Vorlesungsstunde

21.01.2003

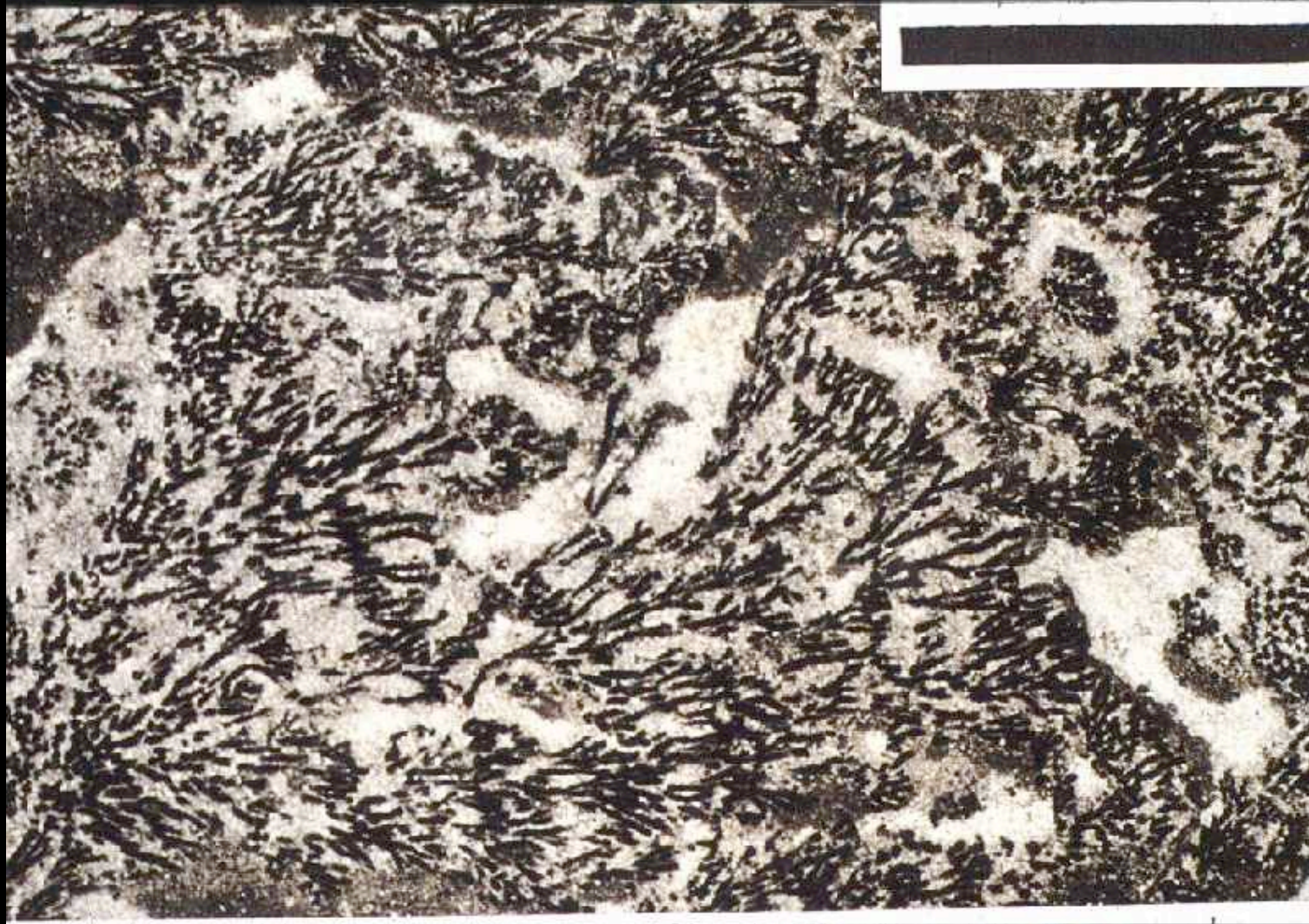
(vorläufige Version)



Dia 1157: Backreef Stromatolith, Proterozoikum



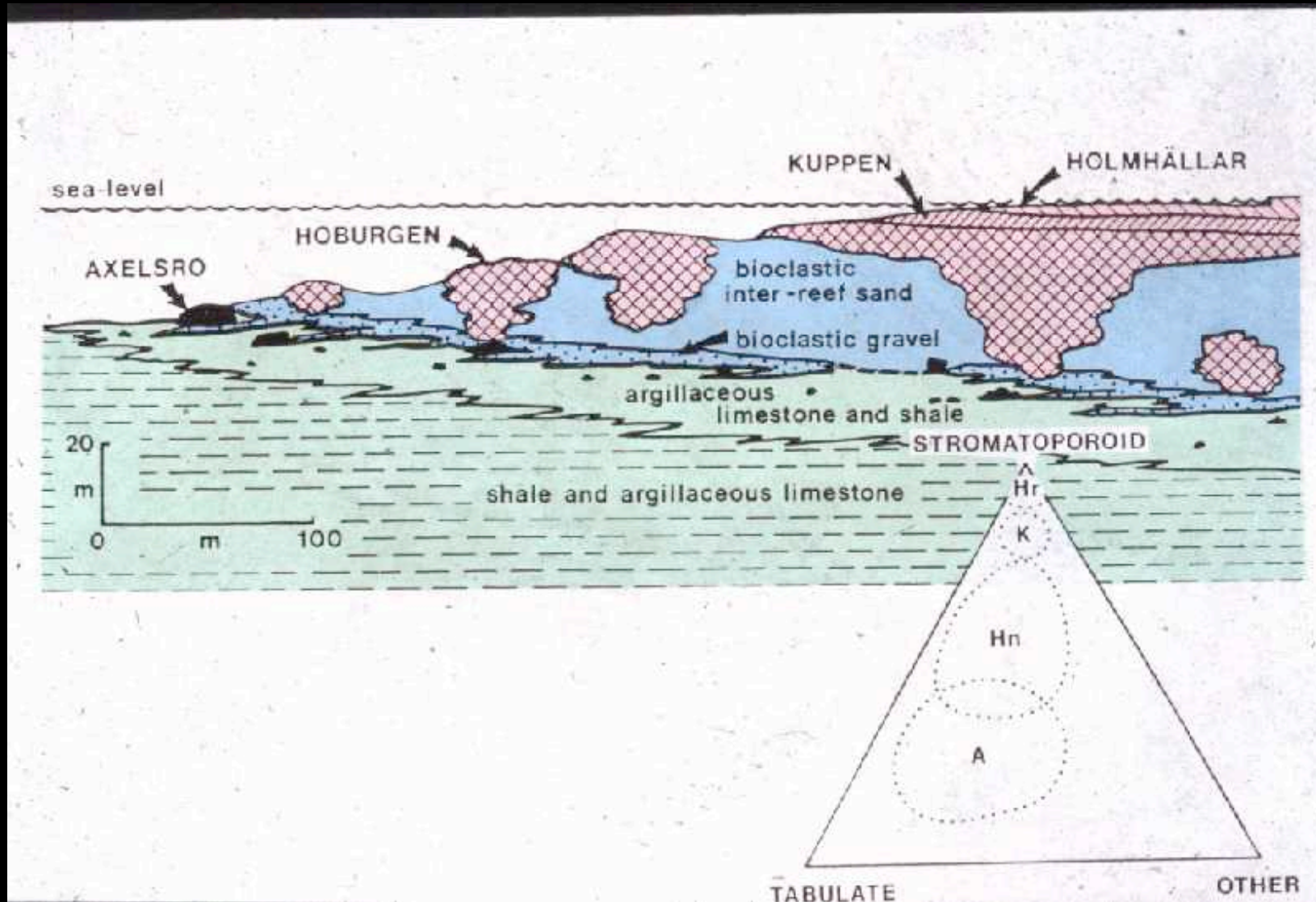
Dia 1158: Archaeocyathiden, Präkambrium



Dia 1159: Epiphyton-Riff, Kambrium

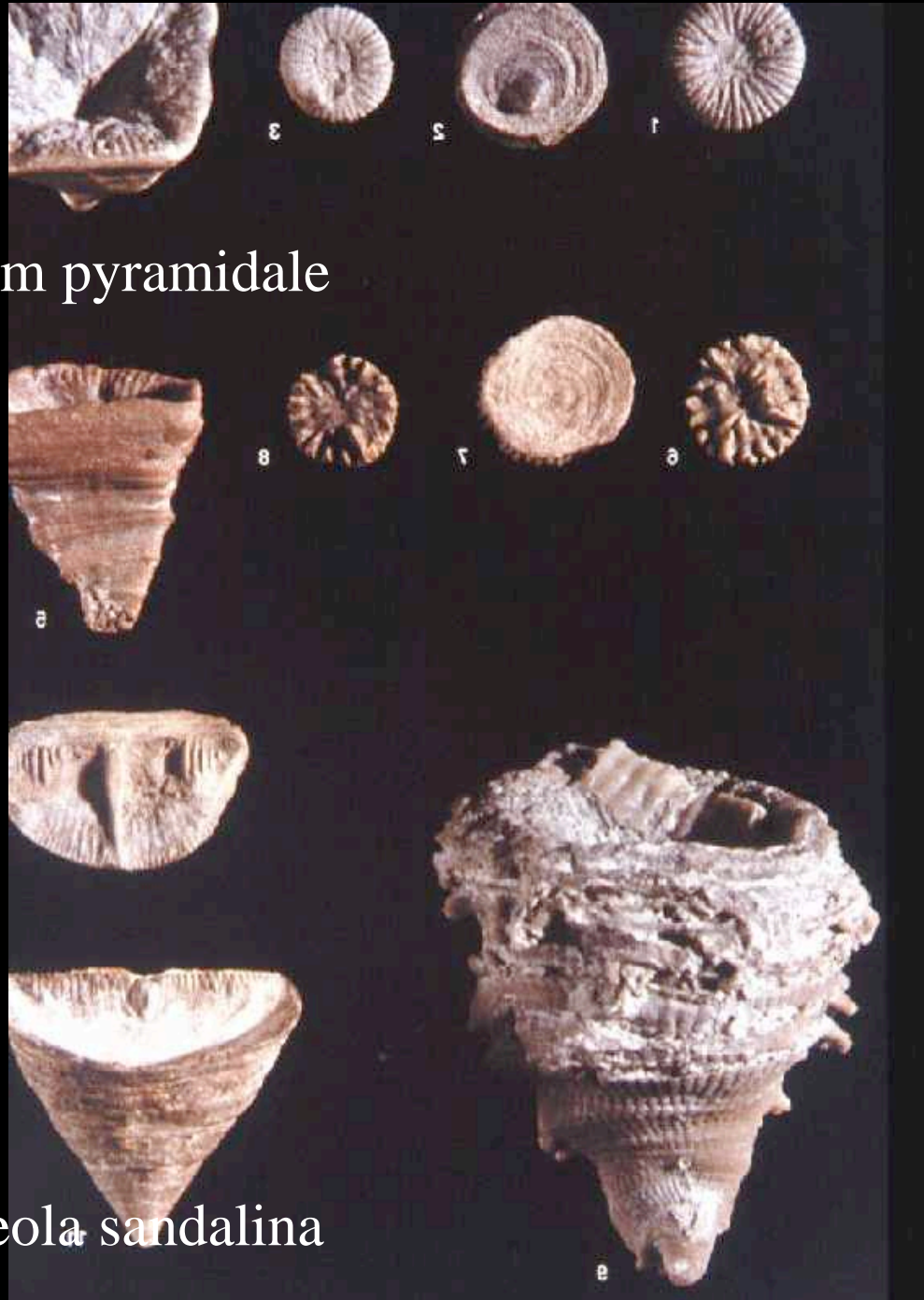


Dia 1164: Vorriff-Crinoiden-Fazies; Silur



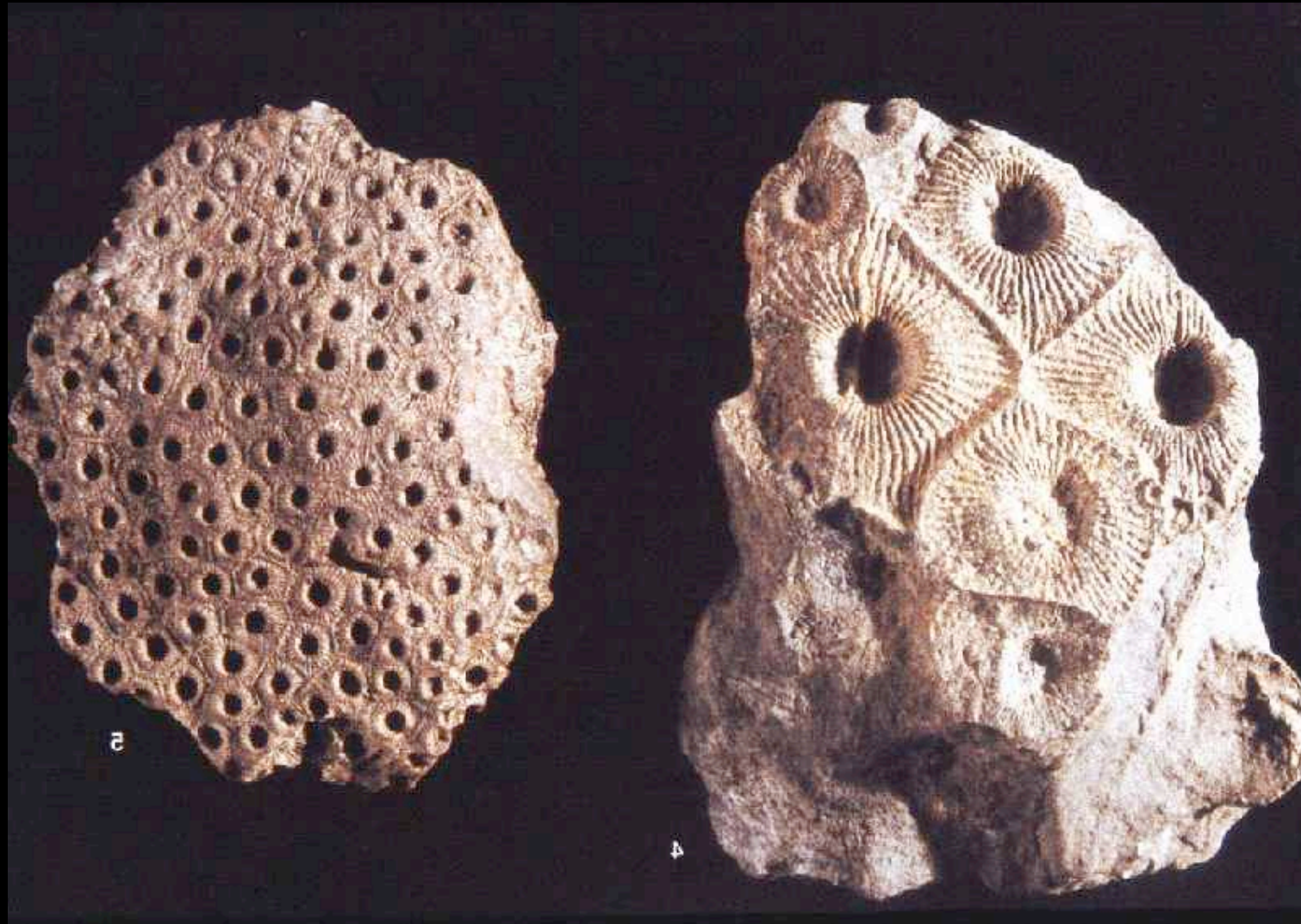
Dia 1431: Silur von Gotland, Riffe

Goniophyllum pyramidale



Dia 1998: Rugosa

Calceola sandalina



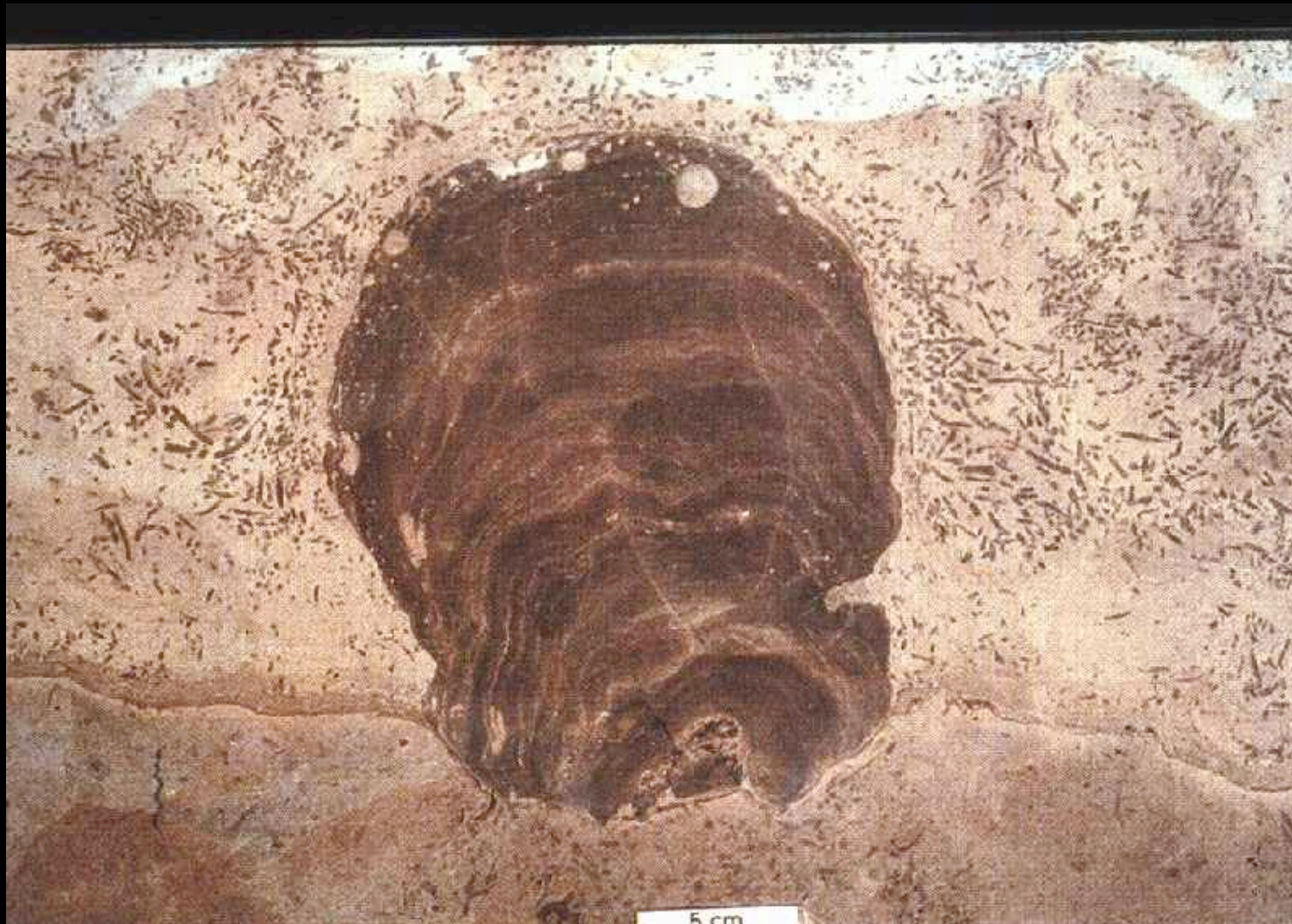
Dia 1999: Rugosa: Cyathophyllum, Hexagonaria



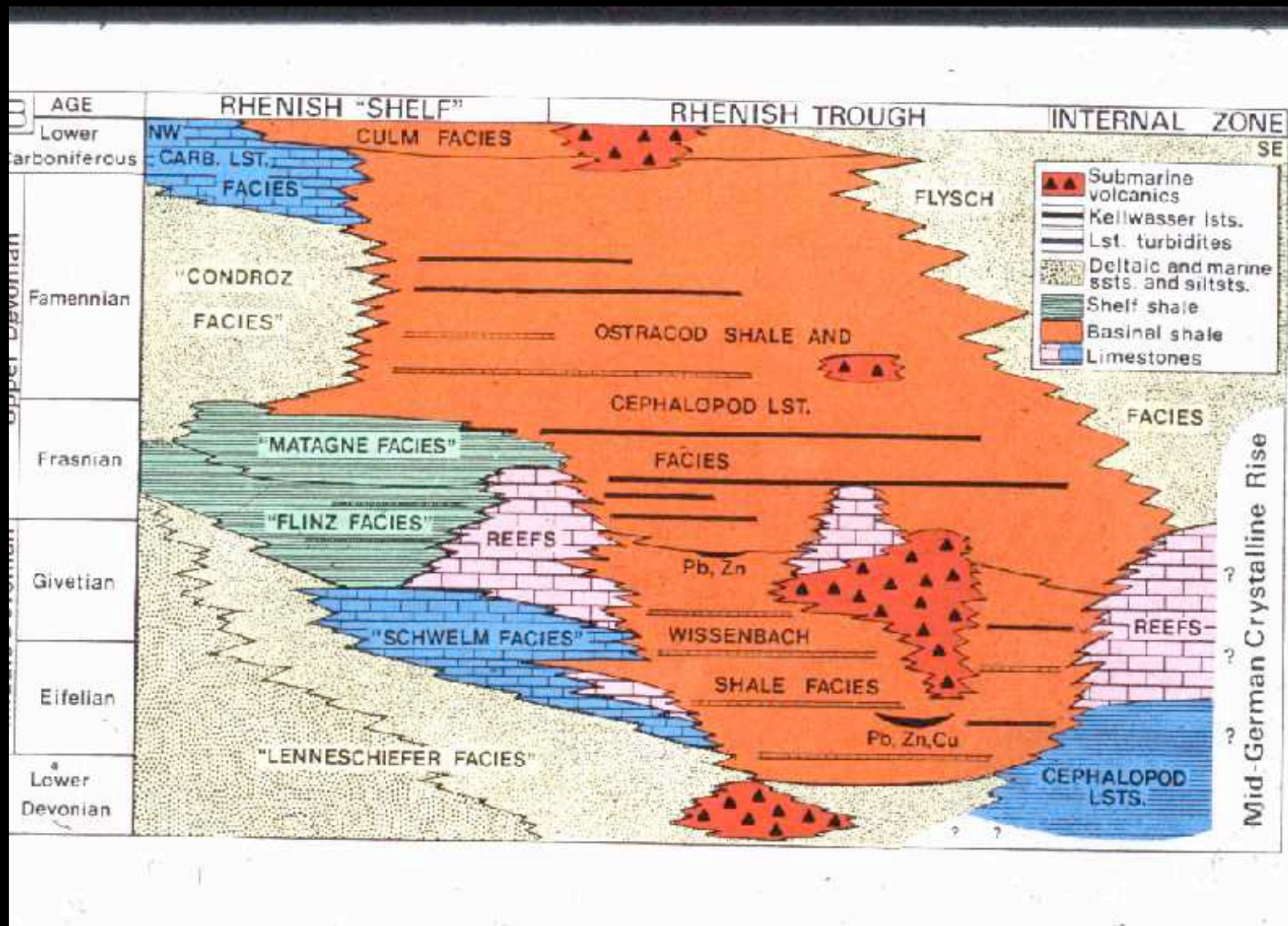
Dia 1997: Tabulata: Halysites, Heliolites



Dia 1162; Stachyoides (Stromatopore) und Renalcis (Mikrobe), Devon



Dia 1163: Stromatoporen: Actinostromaria und Amphipora, Devon



Dia 1432: Fazies im Devon des Rheinischen Schiefergebirges



Dia 1166: Phylloide Algen, Oberkarbon



Dia 685: Phylloide Algen, Perm



Dia 686: Tubiphytes, Perm