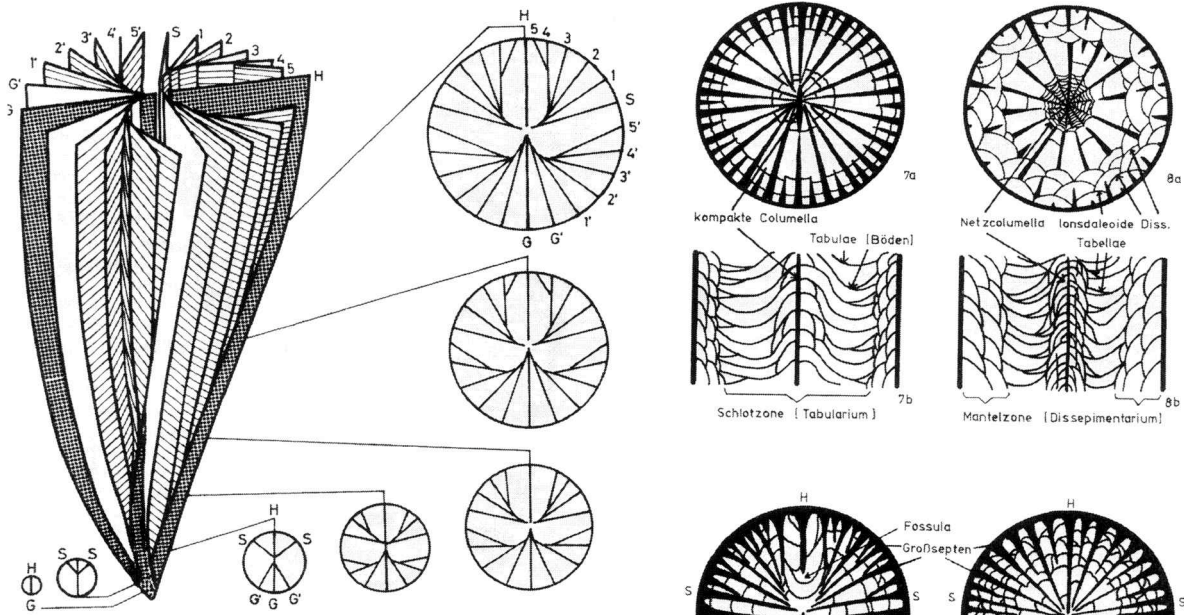
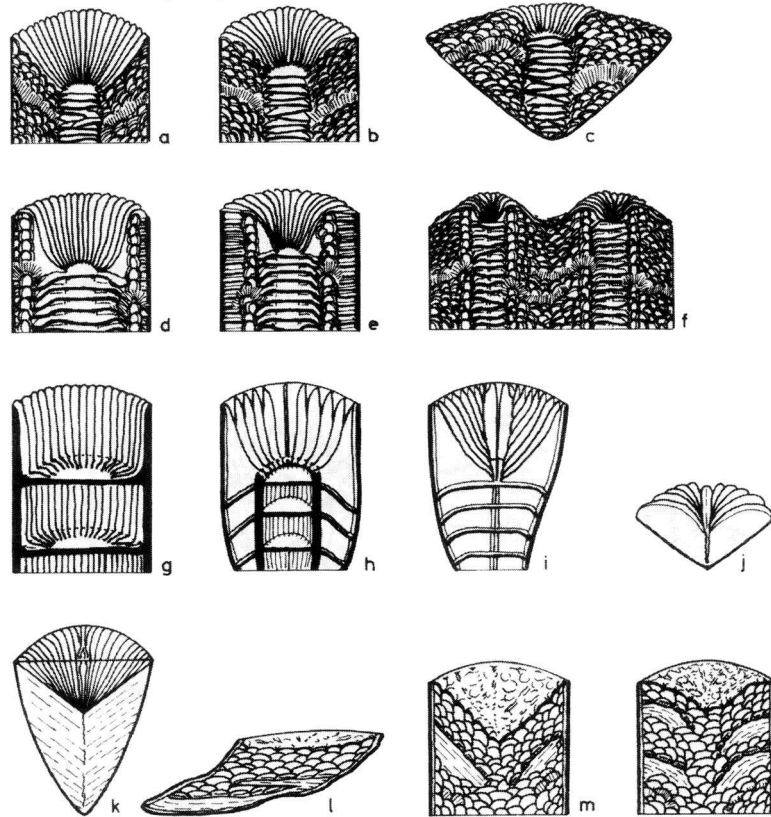


# Rugosa – Kelchstruktur, Septeneinschaltung



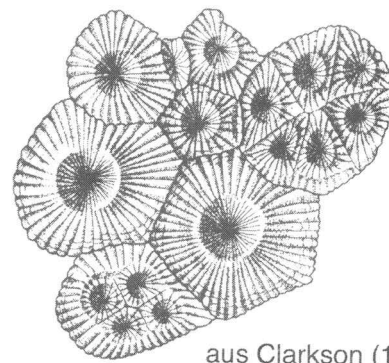
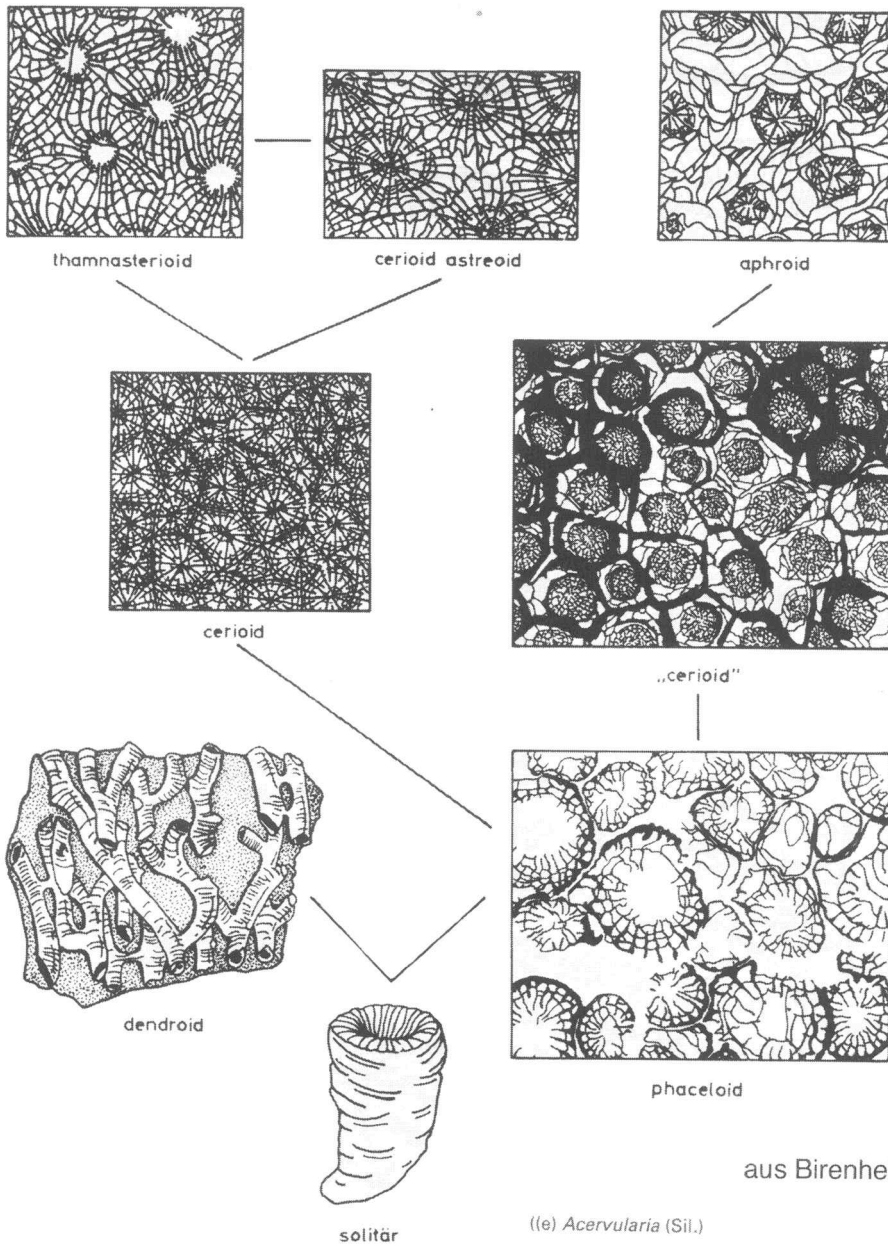
Serial-fiederförmige Septeneinschaltung bei einer rugosen Einzelkoralle

Die wichtigsten Längsschnittbilder der devonischen Rugosa



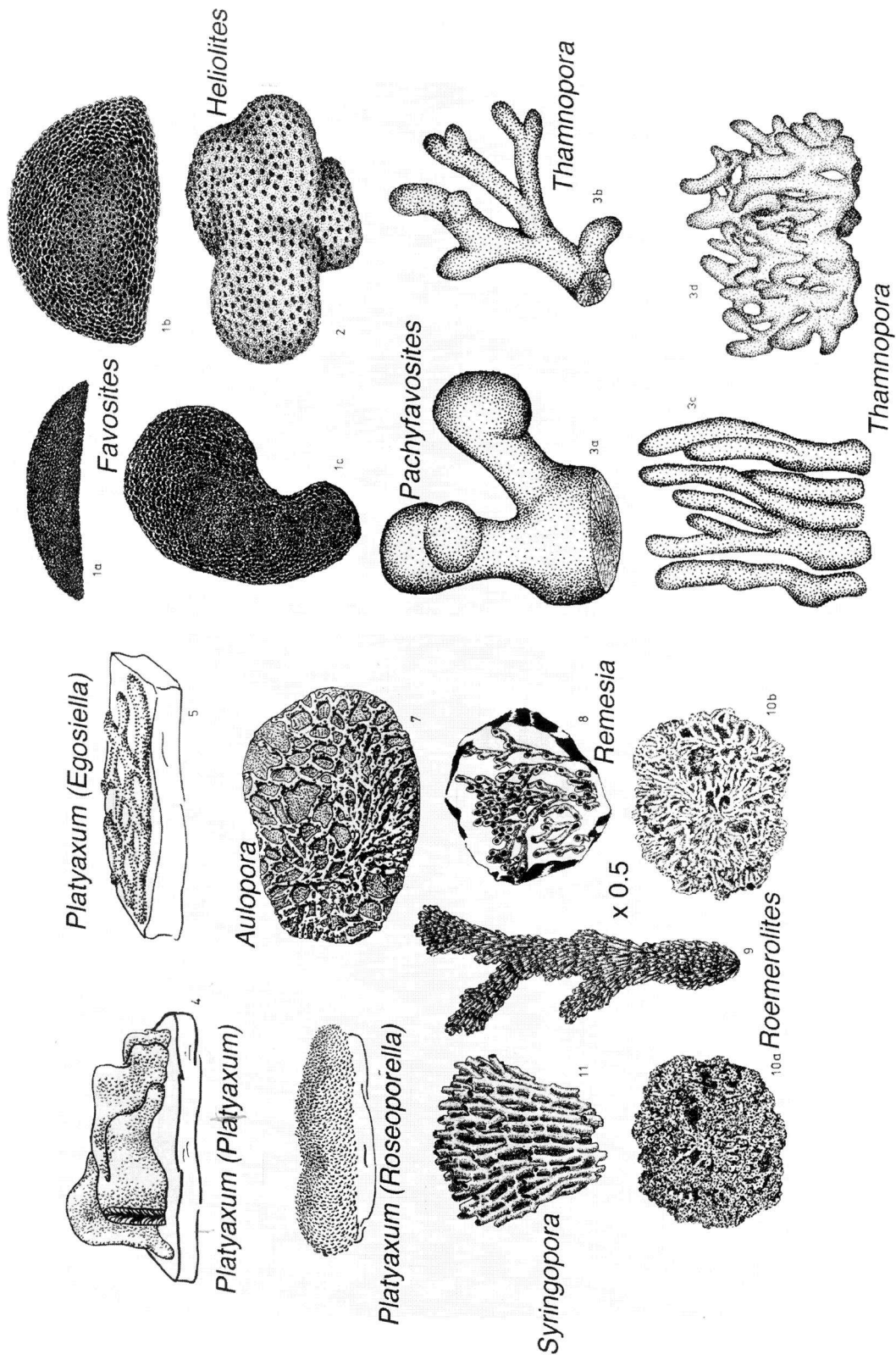
aus Birenheide (1978)

# Rugosa – Kelchformen, Koloniebildung



aus Clarkson (1998)

# Tabulata – Wuchsformen

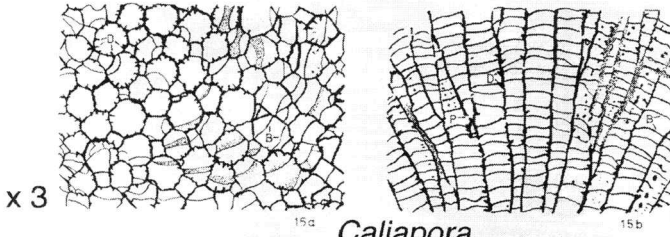


aus Birenheide (1985)

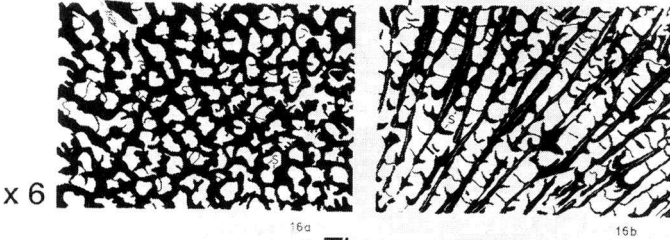
# Tabulata – Kelchstruktur

aus Birenheide (1985)

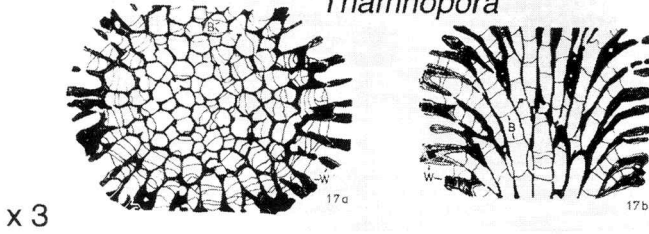
## Favosites



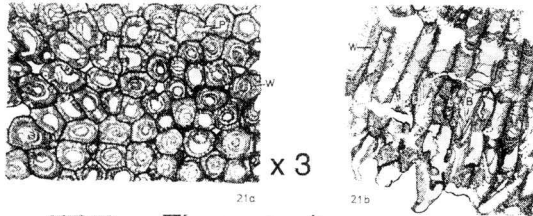
## Caliopora



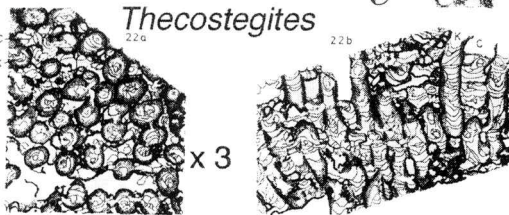
## Thamnopora



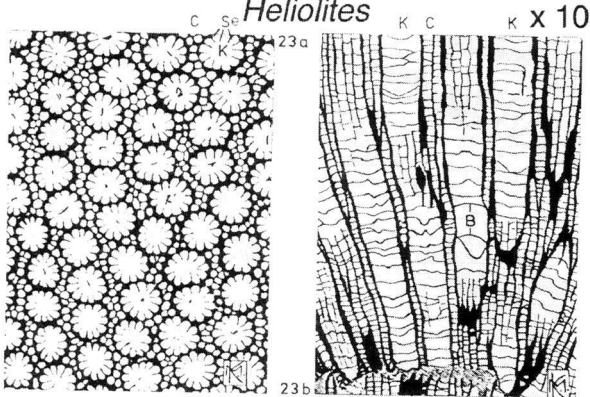
## Roemeripora



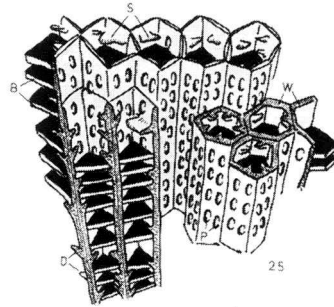
## Thecostegites



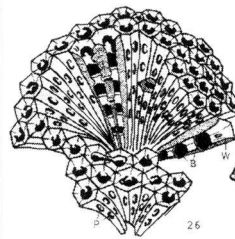
## Heliolites



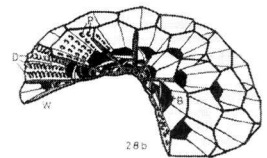
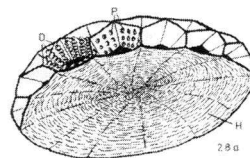
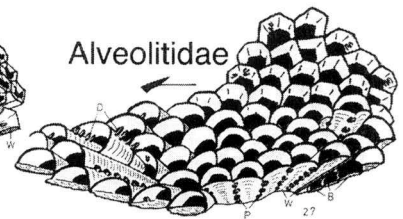
## Raumbildschemata der Korallitenanordnung



## Favositidae



## Alveolitidae



## Micheliniidae